



russbassett

ATC SLATWALL CONSOLES



vector

RADAR CONSOLES

Rear Side - Roll-up door provides bright open access to equipment.



Custom Equipment mounts.



Attention to detail.

Russ Bassett is a leader in the design and manufacturer of consoles for complex, mission critical environments.

We understand the unique requirements of the 24/7 Air Traffic Control environment and focus on the critical issues to support the people processes and technology.

vector - radar consoles are designed specifically for the TRACON and Enroute applications. A wall of slatwall is created on both the front and rear side of the HD seismic frame.

The controller's side is protected from light bleed and accommodates ever-changing equipment requirements.



Tower, TRACON, ARTCC, Traffic Management, Supervisor

vertex

TOWER CONSOLES



Ergonomically designed for real world requirements.

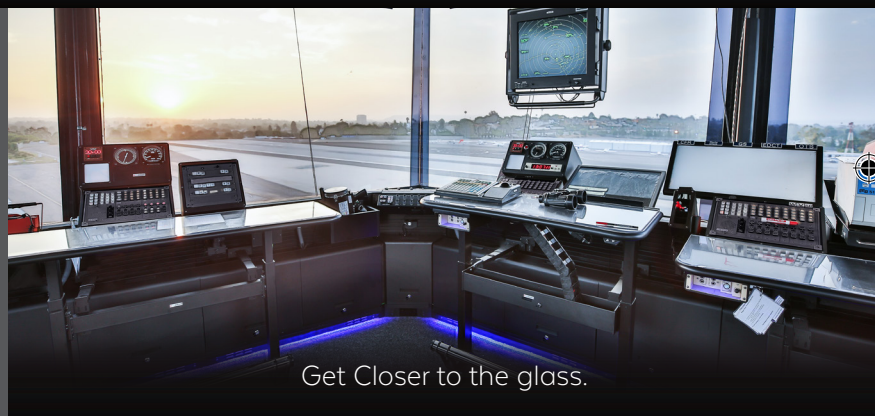
vertex - consoles provide a sturdy, flexible framework that accommodate the ever-changing equipment requirements in a complex ATC tower.

Emphasis is placed on reducing the overall footprint to allow controllers to get closer to the glass for better visibility.

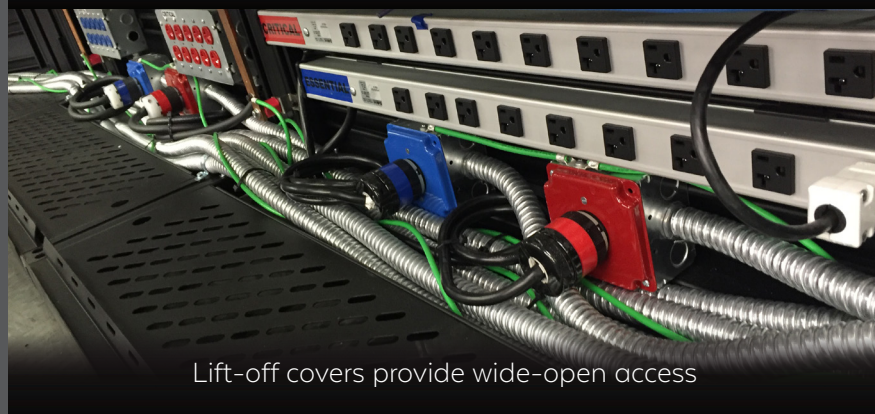
Lift-off front covers expose a wide open area that allow cables to be laid directly into full width cable trays without having to fish through a console frame.

Units can be ordered or field converted to hold CPU's or other required equipment.

"Since 1960, Russ Bassett has been providing quality, innovative products backed with great customer service. Let us show you what we can do for you!"



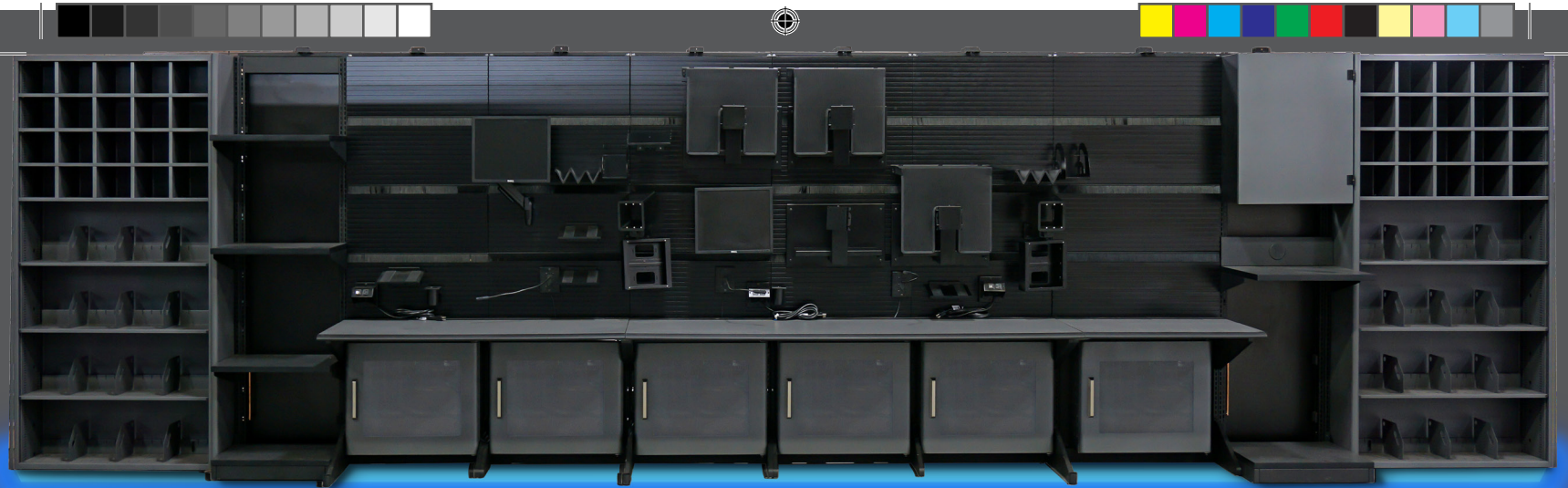
Get Closer to the glass.



Lift-off covers provide wide-open access



Custom equipment housing & HD support mounts



Structure - TMU back wall.

Customers Include

AIR TRAFFIC CONTROL

LAS TRACON
SCT TRACON
JAX TRACON
SMO Tower
ORD - North Tower
ZAN Center
William J. Hughes Technical Center

FEDERAL

FBI
NASA
Air Force
NSA
State Department

PUBLIC SAFETY

Hamilton County E-911
Louisville MetroSafe
PIMA County Communications
Center
San Diego County Sheriff

AIRLINE

United
Delta
American
Southwest

POWER UTILITY

CenterPoint Energy
Duke Energy
Arizona Public Service
Bonneville Power Administration



Vector - Enroute Consoles

rusbassett

AIR TRAFFIC CONTROL CONSOLES

RUSS BASSETT CORP. - 8189 BYRON ROAD WHITTIER, CA 90606 | WWW.RUSBASSETT.COM | TEL 562.945.2445 | INFO@RUSBASSETT.COM